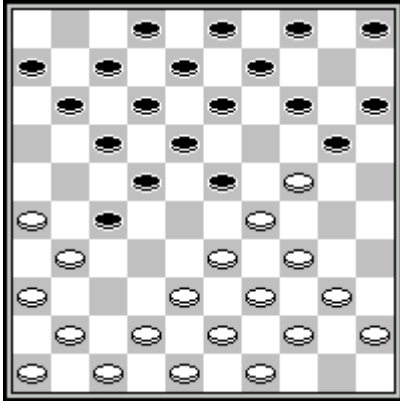


**Karregat, P. - Kalis, W.** NLD-chT 1a, 22-11-1986

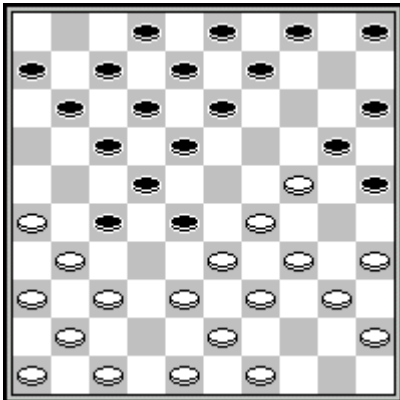
1.33-29 17-22 2.39-33 11-17 3.44-39 6-11 4.50-44 1-6 5.31-26 16-21  
6.32-28 19-23 7.28x19 14x23 8.35-30 10-14 9.30-24 21-27 10.37-31 5-  
10 11.41-37 23-28 12.47-41 ? 0-2



**Ballegooijen, van, M. - Poorte, voor de, G.**

Waalwijk Pinocchio, 26-07-1973

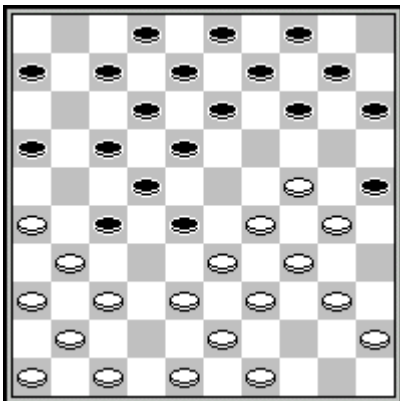
1.33-29 17-22 2.39-33 11-17 3.44-39 6-11 4.50-44 1-6 5.31-  
26 16-21 6.32-28 19-23 7.28x19 14x23 8.35-30 10-14 9.30-24  
21-27 10.37-31 4-10 ? 2-0



**Tangelder, H. - Velraeds, H.**

De Ridder oc, 11-11-1977

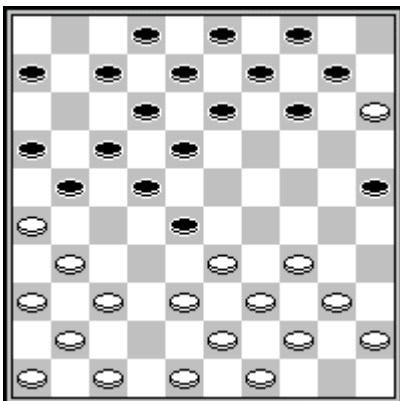
1.33-29 17-22 2.39-33 11-17 3.44-39 6-11 4.50-44 1-6 5.31-  
26 16-21 6.32-28 19-23 7.28x19 14x23 8.35-30 10-14 9.30-24  
23-28 10.40-35 20-25 11.44-40 14-20 12.37-31 21-27 13.42-37  
5-10 ? 2-0



**Tak, van der, C. - Krista, V.**

Prague, 02-05-1987

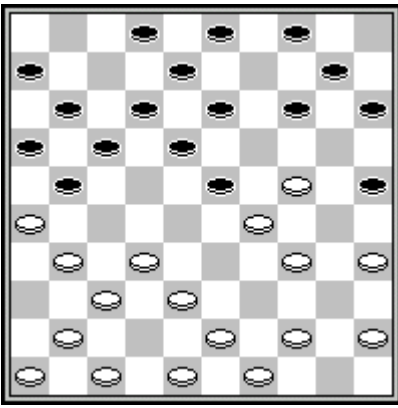
1.33-29 17-22 2.39-33 11-17 3.44-39 6-11 4.50-44 1-6 5.31-  
26 16-21 6.32-28 19-23 7.28x19 14x23 8.35-30 10-14 9.30-24  
21-27 10.37-31 23-28 11.42-37 5-10 12.34-30 20-25 13.40-34  
11-16 14.44-40 14-20 ? 2-0



**Visser, S. - Drost, E.**

FRI-ch, 30-09-1974

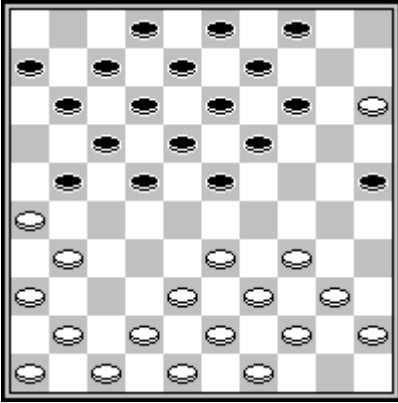
1.33-29 17-22 2.39-33 11-17 3.44-39 6-11 4.50-44 1-6 5.31-  
26 16-21 6.32-28 19-23 7.28x19 14x23 8.35-30 10-14 9.30-24  
23-28 10.37-31 5-10 11.42-37 20-25 12.24-20 15x24 13.29x20  
11-16 14.20-15 14-19 ? 2-0



**Vos, R. - Ballegooijen, van, M.**

NLD-ch sf2, 10-02-2001

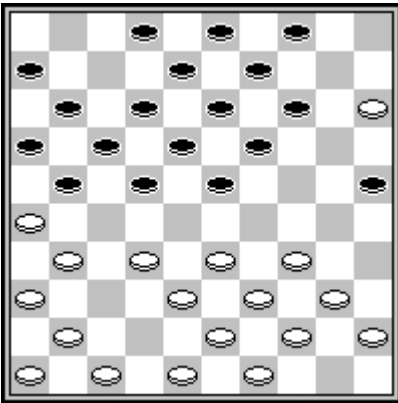
1.34-29 17-22 2.40-34 11-17 3.45-40 6-11 4.50-45 1-6 5.31-26 16-21 6.32-28 19-23 7.28x19 14x23 8.35-30 10-14 9.30-24 5-10 10.33-28 22x33 11.39x19 14x23 12.38-32 9-14 13.42-38 11-16 14.36-31 20-25 15.40-35 7-11 16.31-27 ? **0-2**



**Prouteau, A. - Pellat, J.**

FRA-ch Hon, 24-08-2005

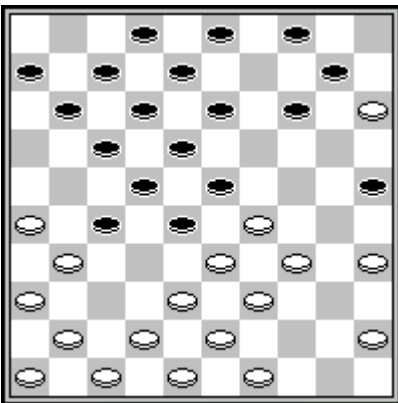
1.33-29 17-22 2.39-33 11-17 3.44-39 6-11 4.50-44 1-6 5.31-26 16-21 6.32-28 19-23 7.28x19 14x23 8.35-30 10-14 9.30-24 5-10 10.37-31 20-25 11.24-20 15x24 12.29x20 14-19 13.20-15 10-14 14.33-28? 22x33 15.39x28? ? **0-2**



**Rijgersberg, S. - Ndjofang, J.**

Brunssum, 08-08-2006

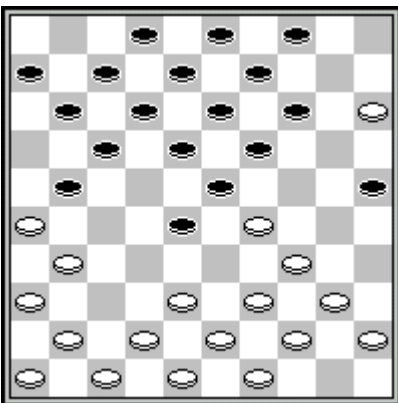
1.33-29 17-22 2.39-33 11-17 3.44-39 6-11 4.50-44 1-6 5.31-26 16-21 6.32-28 19-23 7.28x19 14x23 8.35-30 10-14 9.30-24 5-10 10.37-31 20-25 11.24-20 15x24 12.29x20 14-19 13.20-15 10-14 14.42-37 11-16 15.37-32 7-11 16.31-27? **0-2**



**Zwart, B. - Wijk, van, C.**

NLD-ch sf2, 17-02-1996

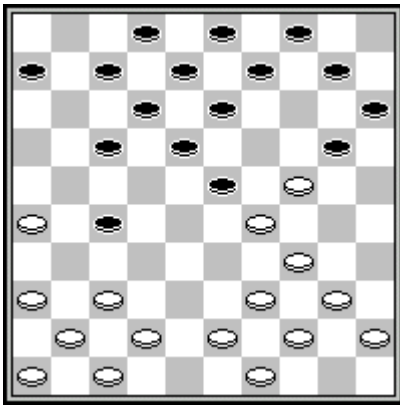
1.33-29 17-22 2.39-33 11-17 3.44-39 6-11 4.50-44 1-6 5.31-26 16-21 6.32-28 19-23 7.28x19 14x23 8.35-30 10-14 9.30-24 23-28 10.40-35 20-25 11.24-20 15x24 12.29x20 14-19 13.20-15 5-10 14.37-31 9-14 15.44-40 21-27 16.34-29 19-23 17.40-34 14-19? **2-0**



**Gnitetskij, V. - Fedoseev, A.**

URS-chU, 00-06-1991

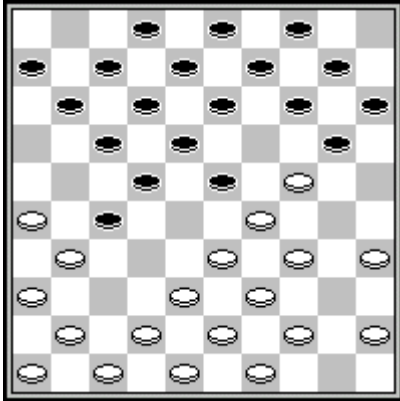
1.33-29 17-22 2.39-33 11-17 3.44-39 6-11 4.50-44 1-6 5.31-26 16-21 6.32-28 19-23 7.28x19 14x23 8.35-30 10-14 9.30-24 5-10 10.37-31 20-25 11.24-20 15x24 12.29x20 14-19 13.20-15 10-14 14.33-29 22-28 15.38-33? **0-2**



**Aalten, van, H. - Steijntjes, L.**

Huissen oc, 00-00-1998

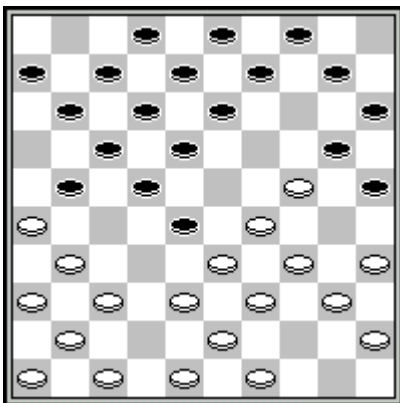
1.33-29 17-22 2.39-33 11-17 3.44-39 6-11 4.50-44 1-6 5.31-26 16-21 6.32-28 19-23 7.28x19 14x23 8.35-30 10-14 9.30-24 5-10 10.33-28 22x33 11.39x19 14x23 12.38-32 11-16 13.43-39 21-27 14.32x21 16x27 15.48-43 17-21? **2-0**



**Gouw, de, E. - Verhagen, M.**

NLD-ch open Brunssum, 04-08-1996

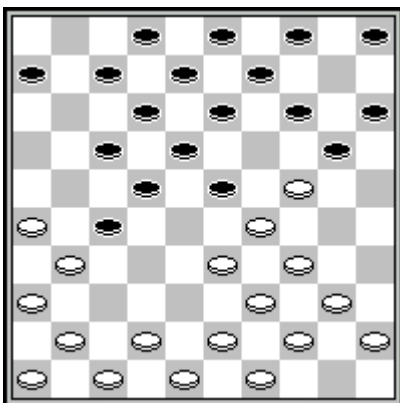
1.33-29 17-22 2.39-33 11-17 3.44-39 6-11 4.50-44 1-6 5.31-26 16-21 6.32-28 19-23 7.28x19 14x23 8.35-30 10-14 9.30-24 5-10 10.37-31 21-27 11.40-35 20-25? **2-0**



**Agafonow, V. - Mitjaef, J.**

Oerozjai, 00-00-1981

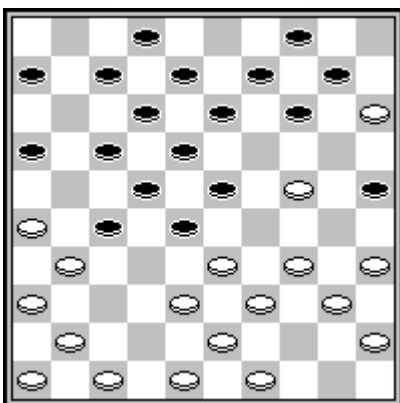
1.33-29 17-22 2.39-33 11-17 3.44-39 6-11 4.50-44 1-6 5.31-26 16-21 6.32-28 19-23 7.28x19 14x23 8.35-30 10-14 9.30-24 23-28 10.40-35 5-10 11.44-40 20-25 12.37-31 14-20 13.42-37 11-16? **2-0**



**Swizinski, V. - Koesnetsow, B.**

URS-chM, 00-06-1975

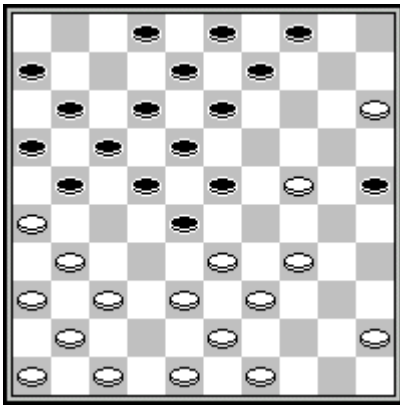
1.33-29 17-22 2.39-33 11-17 3.44-39 6-11 4.50-44 1-6 5.31-26 16-21 6.32-28 19-23 7.28x19 14x23 8.35-30 10-14 9.30-24 11-16 10.38-32 21-27 11.32x21 16x27 12.37-31 6-11? **2-0**



**Venema, A. - Blankendaal, C.**

NLD-chT hoofdklasse b, 26-02-2005

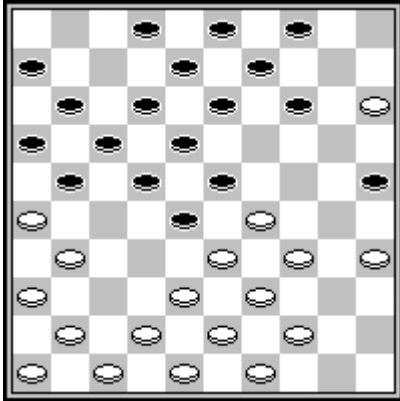
1.34-29 17-22 2.40-34 11-17 3.45-40 6-11 4.50-45 1-6 5.31-26 16-21 6.32-28 19-23 7.28x19 14x23 8.35-30 10-14 9.30-24 5-10 10.37-31 20-25 11.24-20 15x24 12.29x20 14-19 13.20-15 21-27 14.40-35 9-14 15.33-29 23-28 16.38-33 19-23 17.44-40 3-9 18.42-38 11-16 19.29-24 17-21? **2-0**



**Okken, J. - Hoopman, P.**

Nijmegen, 26-07-1985

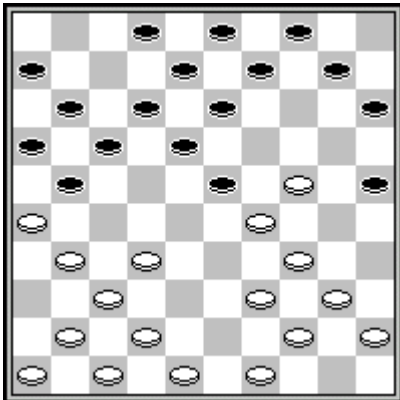
1.33-29 17-22 2.39-33 11-17 3.44-39 6-11 4.50-44 1-6 5.31-26 16-21 6.32-28 19-23 7.28x19 14x23 8.35-30 10-14 9.30-24 23-28 10.40-35 20-25 11.24-20 15x24 12.29x20 14-19 13.20-15 11-16 14.44-40 5-10 15.37-31 7-11 16.34-29 10-14 17.40-34 19-23 18.42-37 14-19 19.29-24 19x30 20.35x24 13-19? **2-0**



**Heuvelman, H.A. - Bokhoven, van, T.**

NLD-chC qfa, 01-01-1981

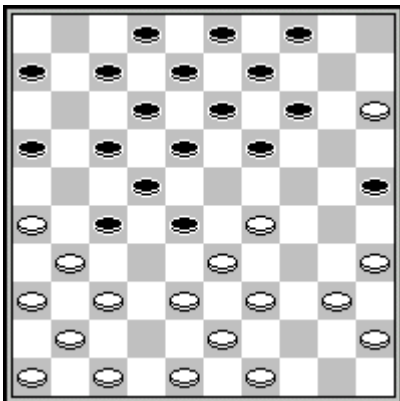
1.33-29 17-22 2.39-33 11-17 3.44-39 6-11 4.50-44 1-6 5.31-26 16-21 6.32-28 19-23 7.28x19 14x23 8.35-30 10-14 9.30-24 23-28 10.40-35 20-25 11.24-20 15x24 12.29x20 14-19 13.20-15 11-16 14.37-31 7-11 15.34-29 5-10 16.45-40 19-23 17.40-34 10-14 18.42-37? **0-2**



**Andreev, S. - Vipulis, R.**

LET-ch, 00-00-1989

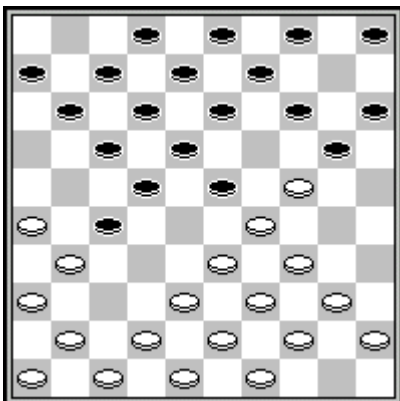
1.34-29 17-22 2.40-34 11-17 3.45-40 6-11 4.50-45 1-6 5.31-26 16-21 6.32-28 19-23 7.28x19 14x23 8.35-30 10-14 9.30-24 5-10 10.33-28 22x33 11.39x19 14x23 12.38-32 11-16 13.36-31 7-11 14.43-39 20-25 15.32-28? **0-2**



**Kos, Jeroen - Blomsma, R.**

The Hague, 13-08-1997

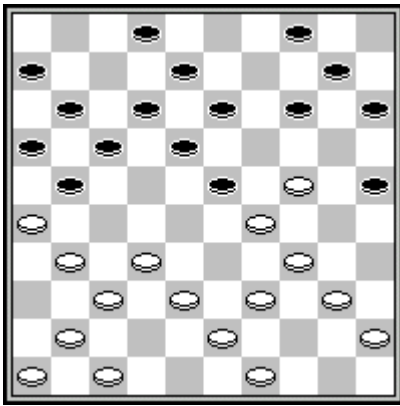
1.33-29 17-22 2.39-33 11-17 3.44-39 6-11 4.50-44 1-6 5.31-26 16-21 6.32-28 19-23 7.28x19 14x23 8.35-30 10-14 9.30-24 21-27 10.37-31 5-10 11.42-37 20-25 12.24-20 15x24 13.29x20 14-19 14.20-15 10-14 15.40-35 23-28 16.44-40 11-16 17.34-29 19-24? **2-0**



**Guinard, L. - Rabatel, J.**

FRA-ch, 24-08-1983

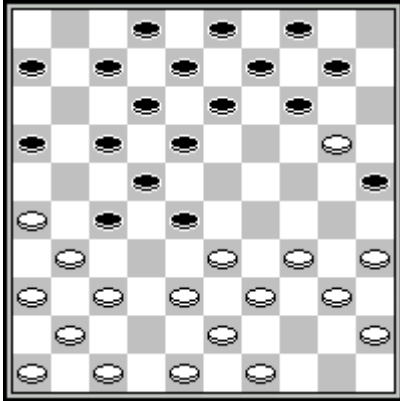
1.33-29 17-22 2.39-33 11-17 3.44-39 6-11 4.50-44 1-6 5.31-26 16-21 6.32-28 19-23 7.28x19 14x23 8.35-30 10-14 9.30-24 21-27 10.37-31 20-25? **2-0**



**Kwakernaak, D. - Kousemaker, A.**

Barendrecht, 16-02-1991

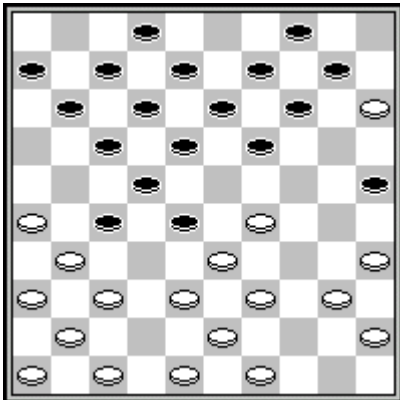
1.33-29 17-22 2.39-33 11-17 3.44-39 6-11 4.50-44 1-6 5.31-26 16-21 6.32-28 19-23 7.28x19 14x23 8.35-30 10-14 9.30-24 5-10 10.33-28 22x33 11.39x19 14x23 12.38-32 20-25 13.43-39 9-14 14.48-43 11-16 15.36-31 3-9 16.40-35 14-19 17.42-38 19x30 18.35x24 9-14 19.44-40 7-11 20.38-33? **0-2**



**Agafonow, V. - Vorobeychik, W.**

Moscow-ch, 00-06-1975

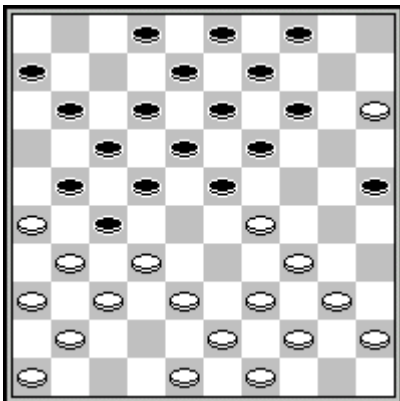
1.34-29 17-22 2.40-34 11-17 3.45-40 6-11 4.50-45 1-6 5.31-26 16-21 6.32-28 19-23 7.28x19 14x23 8.35-30 10-14 9.30-24 5-10 10.37-31 21-27 11.42-37 23-28 12.40-35 20-25 13.44-40 11-16 14.24-20 15x24 15.29x20 10-15? **2-0**



**Rijksen, H. - Sluiter, J.**

NLD-chT h2, 13-11-1976

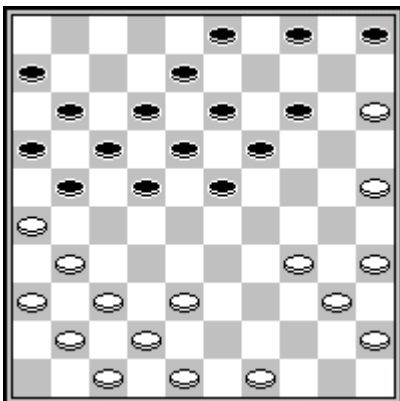
1.34-29 17-22 2.40-34 11-17 3.45-40 6-11 4.50-45 1-6 5.31-26 16-21 6.32-28 19-23 7.28x19 14x23 8.35-30 10-14 9.30-24 5-10 10.37-31 23-28 11.42-37 21-27 12.40-35 20-25 13.24-20 15x24 14.29x20 14-19 15.20-15 9-14 16.44-40 3-9 17.34-29 25-30? **2-0**



**Wiersma, H. - Toet, K.**

NLD-ch, 04-04-1972

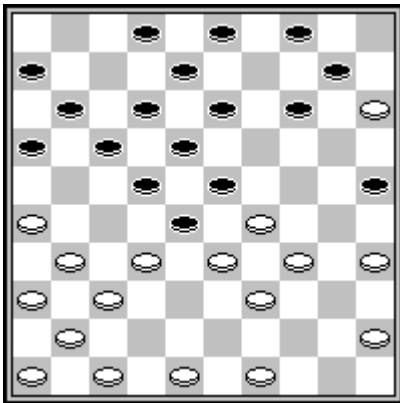
1.33-29 17-22 2.39-33 11-17 3.44-39 6-11 4.50-44 1-6 5.31-26 16-21 6.32-28 19-23 7.28x19 14x23 8.35-30 10-14 9.30-24 21-27 10.37-31 5-10 11.42-37 20-25 12.24-20 15x24 13.29x20 14-19 14.20-15 10-14 15.33-29 11-16 16.47-42 7-11 17.37-32 16-21 18.42-37 19-24? **2-0**



**Vries, de, J. - Nagels, L.**

NLD-chC qfd, 01-01-1985

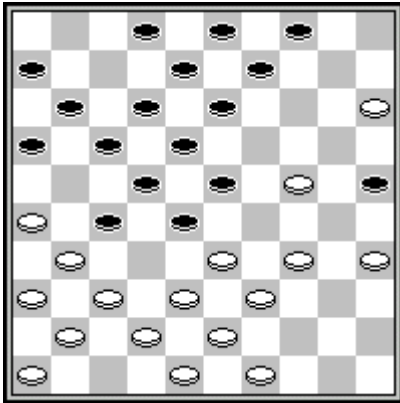
1.34-29 17-22 2.39-34 11-17 3.44-39 6-11 4.50-44 1-6 5.31-26 16-21 6.32-28 19-23 7.28x19 14x23 8.35-30 10-14 9.30-24 23-28 10.40-35 20-25 11.24-20 15x24 12.29x20 14-19 13.20-15 11-16 14.44-40 9-14 15.37-31 7-11 16.34-30 25x34 17.39x30 28x39 18.43x34 18-23 19.30-25 12-18 20.41-37 8-12 21.46-41 2-8 22.48-43? **0-2**



**Toet, K. - Vrijland, W.**

VDK, 23-06-1973

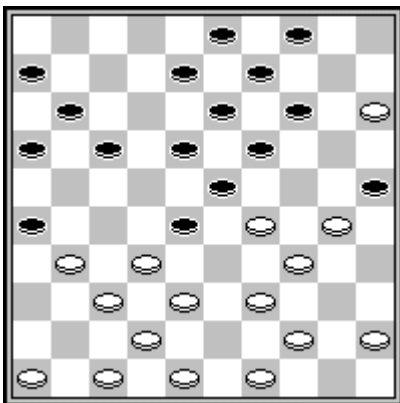
1.33-29 17-22 2.39-33 11-17 3.44-39 6-11 4.50-44 1-6 5.31-26 16-21 6.32-28 19-23 7.28x19 14x23 8.35-30 10-14 9.30-24 21-27 10.37-31 23-28 11.42-37 5-10 12.40-35 20-25 13.44-40 11-16 14.24-20 15x24 15.29x20 7-11 16.20-15 13-19 17.34-29 9-13 18.40-34 19-23 19.38-32 27x38 20.43x32 14-20? **2-0**



**Tak, van der, C. - Grava, D.**

NLD-chT 2b, 08-03-1997

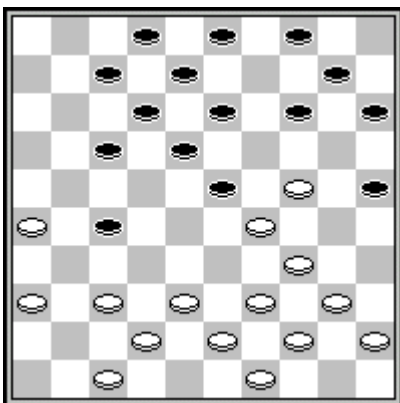
1.33-29 17-22 2.39-33 11-17 3.44-39 6-11 4.50-44 1-6 5.31-26 16-21 6.32-28 19-23 7.28x19 14x23 8.35-30 10-14 9.30-24 5-10 10.37-31 20-25 11.24-20 15x24 12.29x20 11-16 13.20-15 7-11 14.40-35 14-19 15.44-40 10-14 16.41-37 23-28 17.34-29 19-23 18.47-41 23x34 19.40x29 21-27 20.45-40 14-19 21.40-34 19-23 22.29-24 2-7? **2-0**



**Ismailov, T. - Luus, V.**

EST-chC, 20-11-1998

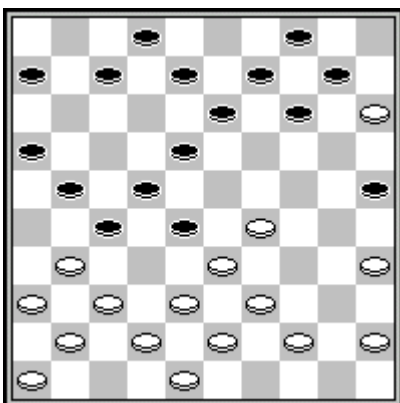
1.34-29 18-22 2.40-34 12-18 3.44-40 7-12 4.50-44 1-7 5.32-28 19-23 6.28x19 14x23 7.35-30 16-21 8.31-26 10-14 9.30-24 5-10 10.37-31 20-25 11.24-20 15x24 12.29x20 14-19 13.20-15 10-14 14.41-37 11-16 15.33-29 7-11 16.40-35 2-7 17.35-30 22-27 18.31x22 17x28 19.26x17 12x21 20.38-32 7-12 21.36-31 12-17 22.43-38 21-26 23.46-41? **0-2**



**Kalbfleisch, K. - Bokhoven, van, T.**

Brunssum, 13-08-1991

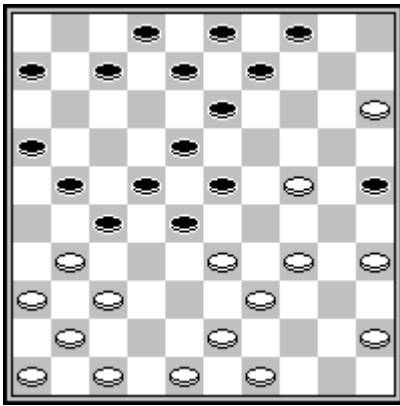
1.33-29 17-22 2.39-33 11-17 3.44-39 6-11 4.50-44 1-6 5.31-26 16-21 6.32-28 19-23 7.28x19 14x23 8.35-30 10-14 9.30-24 5-10 10.33-28 22x33 11.39x19 14x23 12.37-32 21-27 13.32x21 11-16 14.43-39 16x27 15.48-43 20-25 16.41-37 6-11 17.46-41 9-14 18.37-32 11-16 19.32x21 16x27 20.41-37 17-21? **2-0**



**Drunen, van, M. - Riupassa, D.**

Nijmegen, 29-07-1992

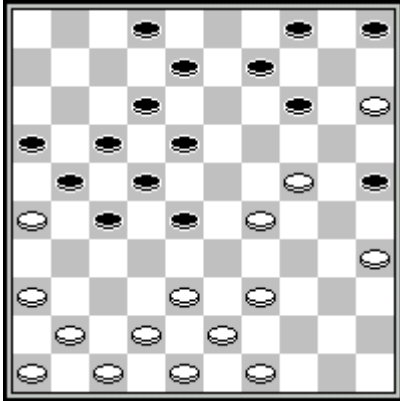
1.33-29 17-22 2.39-33 11-17 3.44-39 6-11 4.50-44 1-6 5.31-26 16-21 6.32-28 19-23 7.28x19 14x23 8.35-30 10-14 9.30-24 5-10 10.37-31 21-27 11.42-37 20-25 12.24-20 15x24 13.29x20 14-19 14.20-15 9-14 15.40-35 23-28 16.44-40 3-9 17.34-29 19-23 18.47-42 23x34 19.40x29 11-16 20.49-44 17-21 21.26x17 12x21 22.31-26? **0-2**



**Schotanus, A. - Hofstee, K.**

NLD-chT ereklasse, 05-10-1974

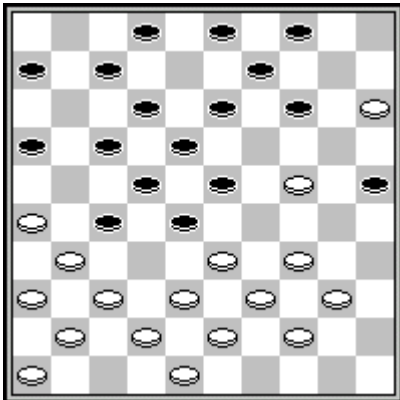
1.33-29 17-22 2.39-33 11-17 3.44-39 6-11 4.50-44 1-6 5.31-26 16-21 6.32-28 19-23 7.28x19 14x23 8.35-30 10-14 9.30-24 23-28 10.40-35 20-25 11.24-20 15x24 12.29x20 14-19 13.20-15 5-10 14.37-31 10-14 15.42-37 19-23 16.33-29 14-19 17.29-24 19x30 18.35x24 11-16 19.38-33 21-27 20.44-40 17-21 21.26x17 12x21 22.40-35 21-26? **2-0**



**Valneris, G. - Stehouwer, A.**

Nijmegen, 27-07-2004

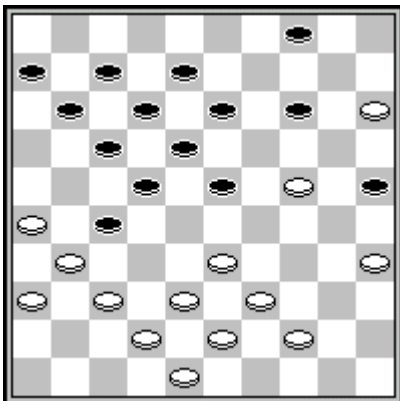
1.33-29 17-22 2.39-33 11-17 3.44-39 6-11 4.50-44 1-6 5.31-26 16-21 6.32-28 19-23 7.28x19 14x23 8.35-30 10-14 9.30-24 23-28 10.37-31 20-25 11.24-20 15x24 12.29x20 14-19 13.20-15 9-14 14.40-35 3-9 15.44-40 21-27 16.34-29 11-16 17.29-23 18x29 18.33x24 19x30 19.35x24 13-18 20.40-35 17-21 21.26x17 12x21 22.45-40 7-12 23.40-34 6-11 24.31-26 11-17 25.34-29 25-30? **2-0**



**Goerkow, E. - Skliarow, E.**

URS-chU Lokomotiv, 00-02-1979

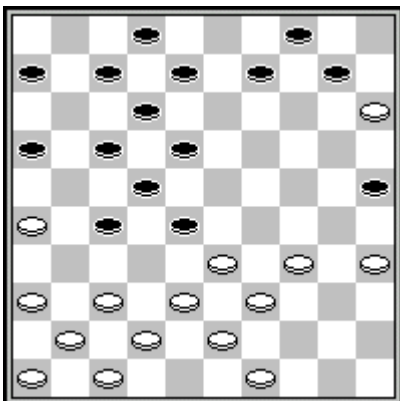
1.33-29 17-22 2.39-33 11-17 3.44-39 6-11 4.50-44 1-6 5.31-26 16-21 6.32-28 19-23 7.28x19 14x23 8.35-30 10-14 9.30-24 21-27 10.37-31 23-28 11.42-37 20-25 12.24-20 15x24 13.29x20 11-16 14.34-29 14-19 15.20-15 19-23 16.47-42 23x34 17.40x29 5-10 18.44-40 10-14 19.40-34 13-19 20.45-40 19-23 21.29-24 8-13 22.49-44 14-20? **2-0**



**Smeenk, B. - Rijkaart, C.**

NLD-ch sf1, 29-01-1984

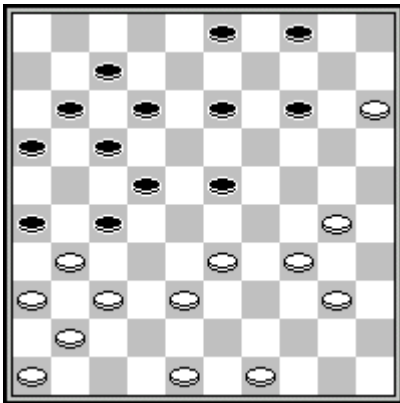
1.33-29 17-22 2.39-33 11-17 3.44-39 6-11 4.50-44 1-6 5.31-26 16-21 6.32-28 19-23 7.28x19 14x23 8.35-30 10-14 9.30-24 23-28 10.40-35 20-25 11.24-20 15x24 12.29x20 14-19 13.20-15 11-16 14.37-31 7-11 15.44-40 5-10 16.34-30 25x34 17.40x29 9-14 18.45-40 3-9 19.40-34 19-24 20.29x20 14x25 21.34-29 10-14 22.41-37 21-27 23.47-41 2-7 24.37-32 28x37 25.41x21 16x27 26.46-41 14-19 27.41-37 9-14 28.49-44 19-23 29.29-24 23-28? **2-0**



**Gantwarg, A. - Galen, van, A.**

Salou, 18-05-2000

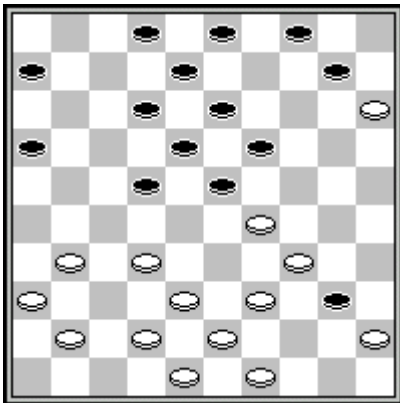
1.33-29 17-22 2.39-33 11-17 3.44-39 6-11 4.31-26 1-6 5.50-44 16-21 6.32-28 19-23 7.28x19 14x23 8.35-30 10-14 9.30-24 23-28 10.40-35 20-25 11.24-20 15x24 12.29x20 14-19 13.20-15 11-16 14.44-40 9-14 15.34-30 25x34 16.40x29 5-10 17.38-32 3-9 18.32x23 19x28 19.45-40 13-19 20.40-34 19-24 21.29x20 14x25 22.42-38 21-27 23.48-42 18-23? **2-0**



**Timofeev, K. - Boelatov, A.**

Bashkortostan-ch, 18-01-2006

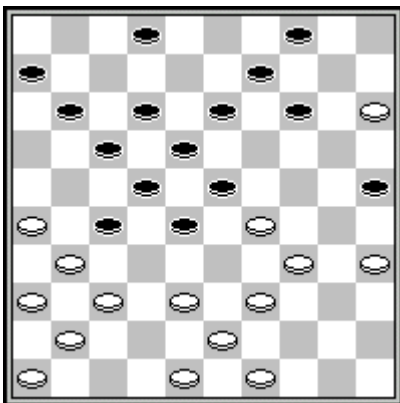
1.33-29 17-22 2.39-33 11-17 3.44-39 6-11 4.50-44 1-6 5.31-26 16-21 6.32-28 19-23 7.28x19 14x23 8.35-30 10-14 9.30-24 5-10 10.37-31 20-25 11.24-20 15x24 12.29x20 14-19 13.20-15 10-14 14.40-35 11-16 15.44-40 7-11 16.42-37 2-7 17.47-42 22-27 18.31x22 17x28 19.33x22 18x27 20.26x17 12x21 21.34-30 25x34 22.40x18 13x22 23.39-33 8-12 24.35-30 11-17 25.37-31 21-26 26.42-37 6-11 27.45-40 19-23 28.43-39 9-13 29.39-34 23-28? **2-0**



**Hajduk, M. - Wigman, V.**

Azen Bielsko-Biala, 00-09-1994

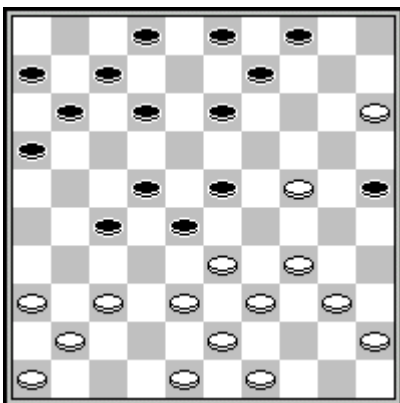
1.34-29 18-22 2.40-34 12-18 3.45-40 7-12 4.50-45 1-7 5.31-26 16-21 6.32-28 19-23 7.28x19 14x23 8.35-30 10-14 9.30-24 5-10 10.37-31 20-25 11.24-20 15x24 12.29x20 11-16 13.20-15 7-11 14.41-37 14-19 15.34-29 23x34 16.40x29 25-30 17.44-40 30-35 18.40-34 19-23 19.47-41 9-14 20.37-32 22-28 21.33x22 17x37 22.41x32 35-40 23.26x17 11x22 24.46-41 14-19 25.39-33? **0-2**



**Clerc, R. - Aalten, van, G.**

NLD-ch, 29-03-1988

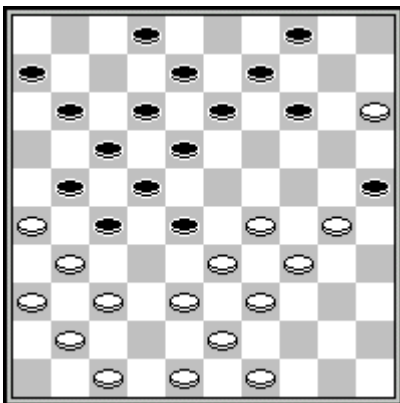
1.33-29 17-22 2.39-33 11-17 3.44-39 6-11 4.50-44 1-6 5.31-26 16-21 6.32-28 19-23 7.28x19 14x23 8.35-30 10-14 9.30-24 23-28 10.40-35 20-25 11.24-20 15x24 12.29x20 14-19 13.20-15 9-14 14.44-40 5-10 15.34-29 21-27 16.37-31 11-16 17.42-37 7-11 18.40-34 3-9 19.47-42 19-23 20.29-24 14-20 21.26-21 20x40 22.21x32 17-21 23.45x34 21-27 24.32x21 16x27 25.31-26 10-14 26.37-31 12-17 27.42-37 8-12 28.33-29 11-16? **2-0**



**Ivens, F. - Mondt, N.**

RDG oc, 06-05-1977

1.34-29 17-22 2.40-34 11-17 3.45-40 6-11 4.50-45 1-6 5.31-26 16-21 6.32-28 19-23 7.28x19 14x23 8.35-30 10-14 9.30-24 23-28 10.40-35 20-25 11.24-20 15x24 12.29x20 14-19 13.20-15 5-10 14.44-40 10-14 15.37-31 21-27 16.42-37 11-16 17.47-42 19-23 18.33-29 17-21 19.26x17 12x21 20.29-24 14-19 21.31-26 19x30 22.26x17 22x11 23.35x24 8-12 24.38-33 18-22 25.42-38 12-18? **2-0**

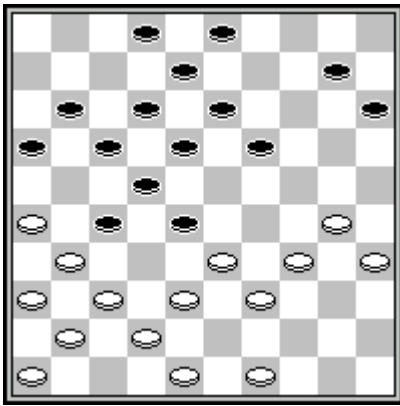


**Wal, van der, R. - Tuik, P.**

FRI-ch, 10-10-1984

1.33-29 17-22 2.39-33 11-17 3.44-39 6-11 4.50-44 1-6 5.31-26 16-21 6.32-28 19-23 7.28x19 14x23 8.35-30 10-14 9.30-24 5-10 10.37-31 23-28 11.40-35 20-25 12.24-20 15x24 13.29x20 14-19 14.20-15 10-14 15.44-40 19-23 16.34-29 23x34 17.40x29 14-19 18.45-40 9-14 19.40-34 3-9 20.41-37 11-16 21.46-41 7-11 22.38-32 21-27 23.32x23 19x28 24.42-38 16-21 25.35-30 13-19? **2-0**

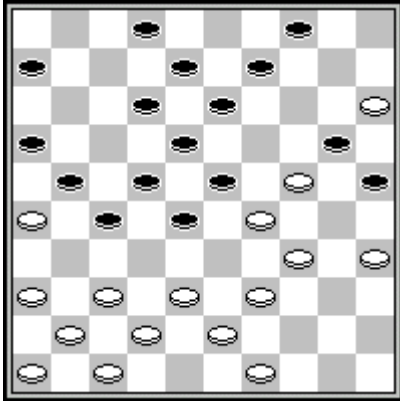




**Waard,de,H. - Brunner,J.**

NLD-chC qfa, 01-01-1997

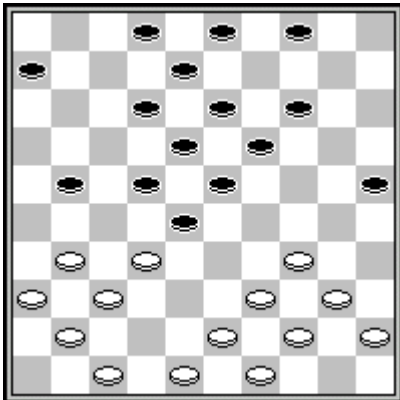
1.33-29 17-22 2.39-33 11-17 3.44-39 6-11 4.50-44 1-6 5.31-26 16-21 6.32-28 19-23 7.28x19 14x23 8.35-30 10-14 9.30-24 21-27 10.37-31 14-19 11.41-37 19x30 12.34x14 9x20 13.47-41 23x34 14.39x30 18-23 15.44-39 11-16 16.40-35 6-11 17.45-40 12-18 18.40-34 7-12 19.30-25 4-10 20.25x14 10x19 21.34-30 5-10 22.39-34 23-28 23.43-39 19-23? **2-0**



**Kusters,M. - Stins,J.**

VAD paas, 11-04-2004

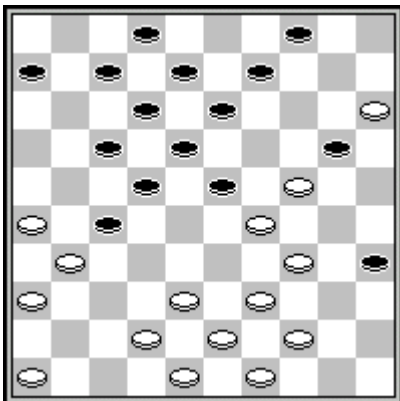
1.34-29 17-22 2.40-34 11-17 3.45-40 6-11 4.50-45 1-6 5.31-26 16-21 6.32-28 19-23 7.28x19 14x23 8.35-30 10-14 9.30-24 5-10 10.37-31 21-27 11.42-37 20-25 12.24-20 15x24 13.29x20 14-19 14.20-15 10-14 15.40-35 23-28 16.44-40 11-16 17.34-29 19-23 18.40-34 14-19 19.29-24 19x30 20.35x24 17-21 21.26x17 12x21 22.33-29 7-12 23.45-40 9-14 24.40-35 14-20 25.48-42 3-9 26.31-26 9-14? **2-0**



**Meijer,W. - Nagel,S.**

FRI-ch open, 24-12-1990

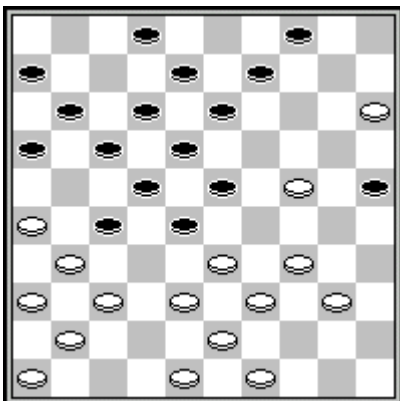
1.33-29 17-22 2.39-33 11-17 3.44-39 6-11 4.50-44 1-6 5.31-26 16-21 6.32-28 19-23 7.28x19 14x23 8.35-30 10-14 9.30-24 5-10 10.37-31 20-25 11.24-20 15x24 12.29x20 11-16 13.20-15 7-11 14.41-37 14-19 15.33-29 10-14 16.46-41 22-28 17.38-33 14-20 18.33x22 17x28 19.26x17 11x22 20.15x24 19x30 21.29-24 30x19 22.42-38 16-21 23.38-32 9-14 24.48-42? **0-2**



**Waard,de,H. - Exter,den,D.**

NLD-chC sfa, 01-01-2001

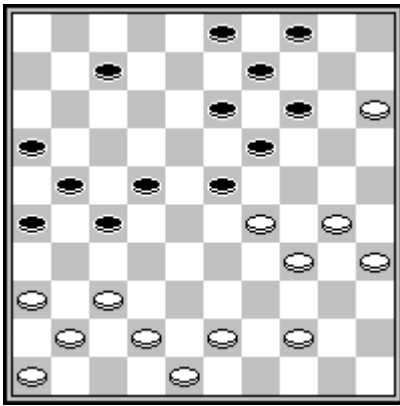
1.33-29 17-22 2.39-33 11-17 3.44-39 6-11 4.50-44 1-6 5.31-26 16-21 6.32-28 19-23 7.28x19 14x23 8.35-30 10-14 9.30-24 23-28 10.37-31 5-10 11.42-37 20-25 12.24-20 15x24 13.29x20 10-15 14.34-29 15x24 15.29x20 14-19 16.20-15 25-30 17.40-34 30-35 18.34-29 19-23 19.29-24 9-14 20.45-40 21-27 21.40-34 14-20 22.33-29 11-16 23.47-42 3-9 24.37-32 28x37 25.41x21 16x27 26.24-19? **0-2**



**Rigterink,J. - Casaril,P.**

Westerhaar Rabo, 05-07-1985

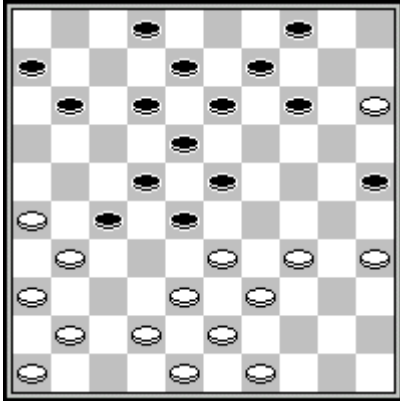
1.33-29 17-22 2.39-33 11-17 3.44-39 6-11 4.50-44 1-6 5.31-26 16-21 6.32-28 19-23 7.28x19 14x23 8.35-30 10-14 9.30-24 23-28 10.40-35 20-25 11.24-20 15x24 12.29x20 14-19 13.20-15 11-16 14.37-31 7-11 15.42-37 5-10 16.44-40 10-14 17.37-32 28x37 18.31x42 19-23 19.41-37 23-28 20.37-31 14-19 21.34-29 9-14 22.40-34 3-9 23.42-37 19-23 24.47-41 14-19 25.29-24 19x30 26.35x24 21-27 27.45-40 2-7? **2-0**



**Schwarzman, A. - Meijer, Hein**

Cannes, 16-02-1993

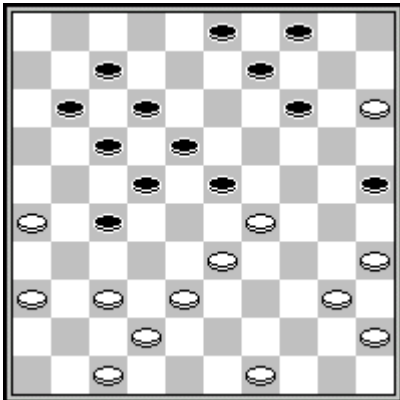
1.33-29 17-22 2.39-33 11-17 3.44-39 6-11 4.50-44 1-6 5.32-28 16-21 6.31-26 19-23 7.28x19 14x23 8.35-30 10-14 9.30-24 5-10 10.37-31 20-25 11.24-20 15x24 12.29x20 14-19 13.20-15 10-14 14.41-37 22-27 15.31x22 17x28 16.26x17 12x21 17.33x22 18x27 18.40-35 7-12 19.34-30 25x34 20.39x30 12-18 21.44-39 11-16 22.45-40 6-11 23.40-34 21-26 24.39-33 16-21 25.33-29 11-16 26.47-41 2-7 27.49-44 8-12 28.38-33 18-22 29.29x18 12x23 30.33-29 13-18? **2-0**



**Golubeva, Z. - Os, van, D.**

Riga, 26-04-1998

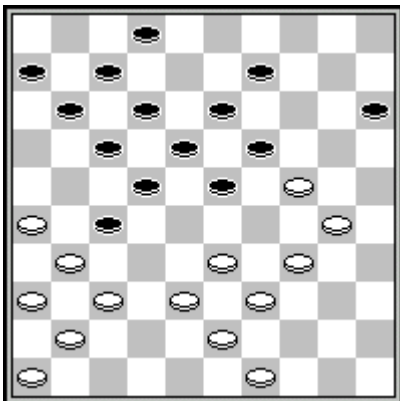
1.33-29 17-22 2.39-33 11-17 3.44-39 6-11 4.50-44 1-6 5.31-26 16-21 6.32-28 19-23 7.28x19 14x23 8.35-30 10-14 9.30-24 23-28 10.37-31 20-25 11.24-20 15x24 12.29x20 14-19 13.20-15 9-14 14.40-35 5-10 15.44-40 3-9 16.35-30 21-27 17.40-35 19-23 18.42-37 11-16 19.30-24 14-20 20.26-21 20x40 21.21x32 17-21 22.45x34 21-27 23.32x21 16x27 24.47-42 7-11 25.31-26 10-14 26.37-31 12-17? **2-0**



**Waard, de, H. - Livestro, J.**

ADG, 18-10-1990

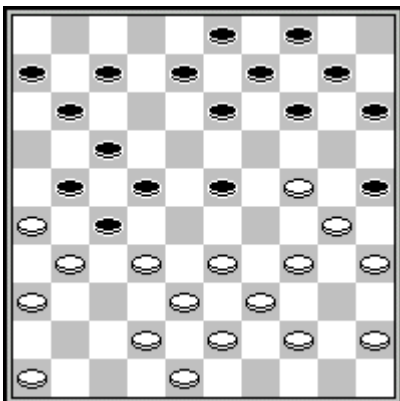
1.33-29 17-22 2.39-33 11-17 3.44-39 6-11 4.50-44 1-6 5.31-26 16-21 6.32-28 19-23 7.28x19 14x23 8.35-30 10-14 9.30-24 5-10 10.37-31 20-25 11.24-20 15x24 12.29x20 11-16 13.40-35 7-11 14.44-40 14-19 15.20-15 10-14 16.41-37 2-7 17.46-41 23-28 18.38-32 21-27 19.32x23 18x38 20.43x21 16x27 21.42-38 19-23 22.37-32 11-16 23.32x21 16x27 24.41-37 23-28 25.37-32 28x37 26.31x42 13-18 27.39-33 8-13 28.42-37 6-11 29.48-42 13-19 30.34-29 19-23 31.49-44? **0-2**



**Agafonow, V. - Lepsic, M.**

Stasjoew, 00-05-1978

1.33-29 17-22 2.39-33 11-17 3.44-39 6-11 4.50-44 1-6 5.31-26 16-21 6.32-28 19-23 7.28x19 14x23 8.35-30 10-14 9.30-24 21-27 10.37-31 23-28 11.42-37 5-10 12.40-35 28-32 13.37x28 18-23 14.28x19 14x23 15.29x18 20x40 16.45x34 12x23 17.33-29 13-18 18.38-33 9-13 19.43-38 8-12 20.48-43 3-9 21.35-30 10-14 22.30-25 13-19 23.47-42 9-13 24.44-40 14-20 25.25x14 19x10 26.40-35 10-14 27.35-30 14-19 28.42-37 4-9 29.29-24 9-14? **2-0**



**Wiersma, H. - Hooijberg, J.**

NLD-ch, 16-04-1980

1.33-29 17-22 2.39-33 11-17 3.44-39 6-11 4.50-44 1-6 5.31-26 16-21 6.32-28 19-23 7.28x19 14x23 8.35-30 10-14 9.30-24 21-27 10.37-31 23-28 11.42-37 5-10 12.34-30 20-25 13.40-34 11-16 14.44-40 7-11 15.47-42 16-21 16.49-44 2-7 17.37-32 28x37 18.41x32 18-23 19.29x18 12x23 20.40-35 23-29? **2-0**